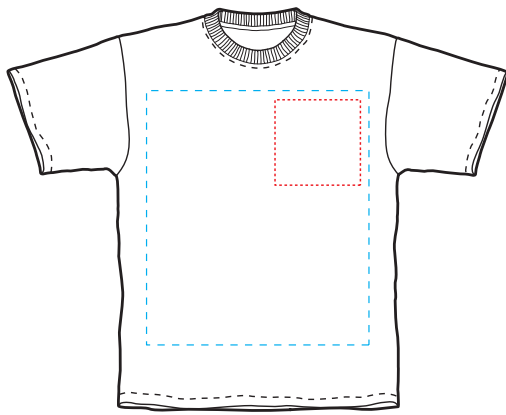
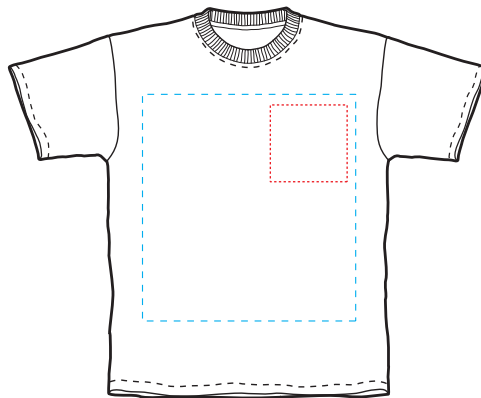


Print Area

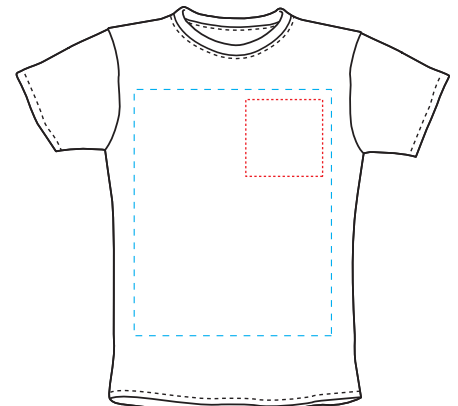
Products	Template	Max. Print Area (WxH)
Standard Apparel Men's T-Shirt, Long Sleeve T-Shirt, Women's T-Shirt, Women's Long Sleeve T-Shirt	Front/Back	13" x 16"
	Pocket	5" x 5"
Small Apparel Women's Baby Doll Tee, Kids T-Shirt, Women's Fitted Jersey Tee, Women's Fitted Baby Rib Long Sleeve Tee, Kids Long Sleeve T-Shirt, Toddlers T-Shirt, Toddlers Love Sleeve Tee	Front/Back	10" x 12"
	Pocket	4" x 4"



ADULT TEE



YOUTH TEE



WOMENS TEE

Design Services

Design Services

Use our Custom Design Services by providing text, images or files you would like used on your design and one of our Customer Service Professionals will provide you with a proof designed just for you. After two edits, additional charges may apply, general fees start with \$50 per hour.

Email Files

Files can be emailed to design@compass120.com, please include the details of what you would like to order along with contact information.

Compass 120 Apparel can also clean up your design, to make it "print-ready" for additional costs.

Artwork Specs

Acceptable file formats for printing:

EPS (*Encapsulated Post Script*) **RECOMMENDED**, AI (*Adobe Illustrator*), PDF (*Adobe PDF*), PSD (*Adobe Photoshop*), JPG (*High Resolution JPEG*), PNG (*High Resolution PNG*), TIFF (*High Resolution TIFF*).

Important File Tips:

- Convert all text to outlines/curves
- Size design “*ready-to-print*”. Meaning, the size you want the image to be.

Vector Files:

These files are line art, scalable to any size and never lose resolution, image will stay clean and crisp

Follow these tips for Vector Files:

EPS (CS6 or lower), AI (CS6 or lower), PDF. When submitting these files be sure you have converted all fonts to outlines or curves. Vector files can be submitted at any size, but we would prefer the design to be to size wanted printed.

Raster Files/Images:

These files are pixel based images, so when the image/file is enlarged it may become blurry/pixelated if the image/file is not high resolution.

Follow these tips for Raster Files:

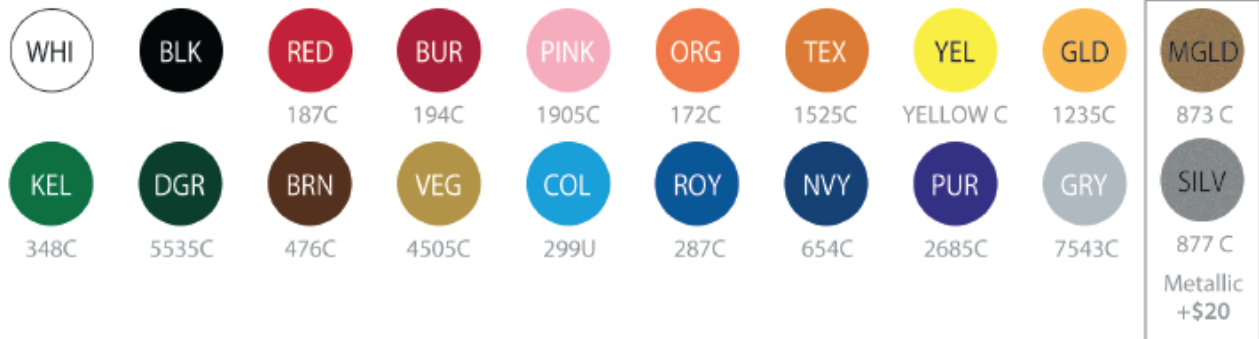
PSD, JPG, PNG, TIFF. Please follow the guidelines below 100% scale (full size output) at 300 dpi ONLY Thumbnail sized JPG's or images taken off general websites are not at a high enough resolution to be used.

Raster vs Vector & Outline Text



Ink Colors

We offer the industry standard of high-pigment (HP) inks for all fabrics. These inks produce excellent results.



Apparel Brands

We offer these and many more brands for your needs.



ALTERNATIVE.



BELLA+CANVAS.
LOS ANGELES

American Apparel™



Order Form

DATE

PERSONAL INFORMATION

CLIENT PROJECT NAME
 ADDRESS CITY STATE ZIP
 PHONE EMAIL

DESIGN INFORMATION

- DESIGN SUPPLIED (EPS, AI, PDF, JPEG, PNG, TIFF) *SUPPLY TO DESIRED SIZE*
 COMPASS 120 DESIGNING (\$50 HR RATE) *MINIMUM 2 HOURS*

EMAIL ART:
DESIGN@COMPASS120.COM

COLOR(S) IN DESIGN

<input type="radio"/> WHI	<input type="radio"/> BLK	<input type="radio"/> RED 187C	<input type="radio"/> BUR 194C	<input type="radio"/> PINK 1905C	<input type="radio"/> ORG 172C	<input type="radio"/> TEX 1525C	<input type="radio"/> YEL YELLOW C	<input type="radio"/> GLD 1235C	<input type="radio"/> MGLD 873 C
<input type="radio"/> KEL 348C	<input type="radio"/> DGR 5535C	<input type="radio"/> BRN 476C	<input type="radio"/> VEG 4505C	<input type="radio"/> COL 299U	<input type="radio"/> ROY 287C	<input type="radio"/> NVY 654C	<input type="radio"/> PUR 2685C	<input type="radio"/> GRY 7543C	<input type="radio"/> SILV 877 C Metallic +\$20

MARK EACH COLOR WITH IT'S CODE

COLOR # 1
 COLOR # 2
 COLOR # 3

TOTAL COLOR(S)
FOR FULL COLOR, WRITE "FULL COLOR"

PRINT AREA(S)

FRONT BACK SLEEVE POCKET OTHER

APPAREL INFORMATION

GENDER

SHIRT SIZES
 NUMBER OF SHIRTS PER SIZE

STYLE NUMBER/COLOR	GENDER			SHIRT SIZES											TOTAL	
	M	W	Y	XXS	XS	S	M	L	XL	2XL	3XL	4XL	5XL			
	<input type="radio"/>	<input type="radio"/>	<input type="radio"/>													
	<input type="radio"/>	<input type="radio"/>	<input type="radio"/>													
	<input type="radio"/>	<input type="radio"/>	<input type="radio"/>													
	<input type="radio"/>	<input type="radio"/>	<input type="radio"/>													
	<input type="radio"/>	<input type="radio"/>	<input type="radio"/>													
	<input type="radio"/>	<input type="radio"/>	<input type="radio"/>													
	<input type="radio"/>	<input type="radio"/>	<input type="radio"/>													
TOTAL SHIRTS																

EXTRA SERVICES

- RUSH JOB
 DELIVERY TRACKING
 INTERNATIONAL SHIPPING
 SHIP BLIND (HAVE INVOICE SENT TO A DIFFERENT ADDRESS)

PLEASE ALLOW 7-14 BUSINESS DAYS
ORDERS INSIDE OF 5 BUSINESS DAYS WILL REQUIRE A RUSH CHARGE